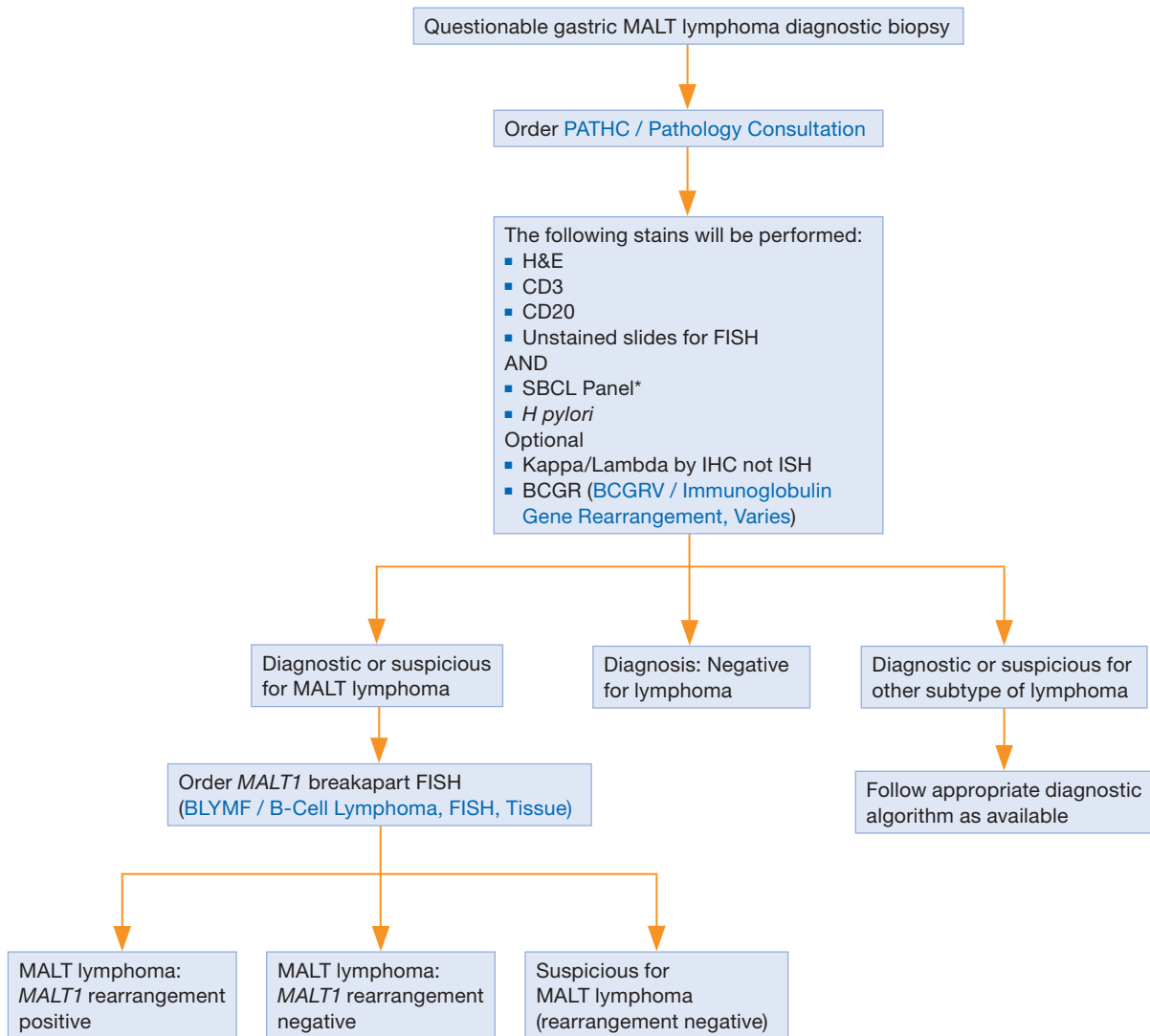


Gastric MALT Lymphoma Diagnostic Algorithm



MALT=Mucosa-associated lymphoid tissue
BCGR=B cell gene rearrangement
H&E=Hematoxylin and eosin
H pylori=*Helicobacter pylori*

*SBCL is composed of the following stains: cyclin D1, CD10, CD5, CD23, CD43, IgD, Ki67, BCL6 and BCL2. If limited tissue perform cyclin D1, CD43 and IgD.