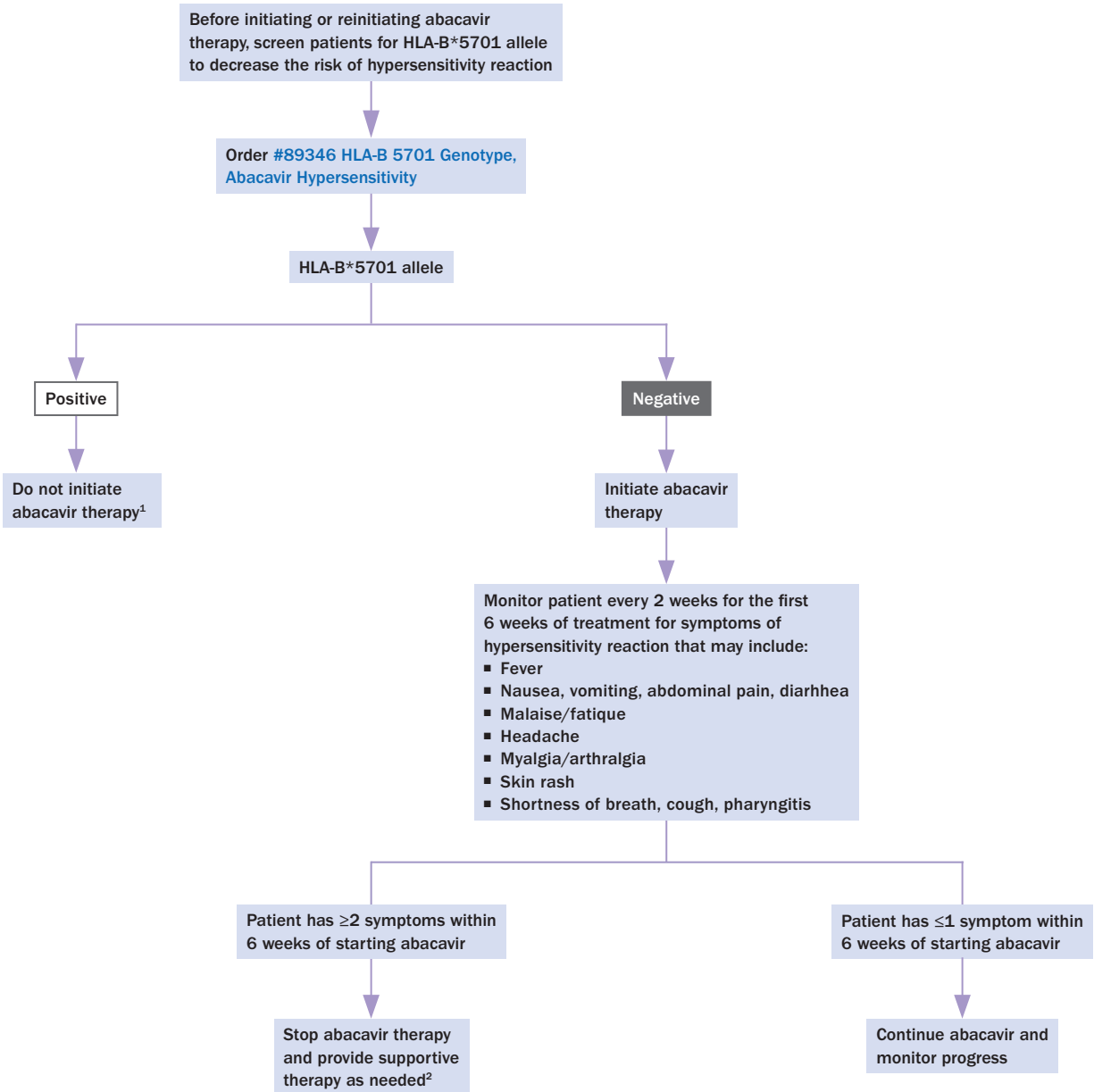


Abacavir Hypersensitivity Testing and Initial Patient Management Algorithm



1. Do not initiate abacavir therapy unless the risks of not giving it outweigh the risks of giving it

2. For more information on patient management, see Hughes CA, Foisy MM, Dewhurst N, et al: Abacavir Hypersensitivity Reaction: an Update. *Ann Pharmacother* 2008;42:387-396